



AMATEUR RADIO SERVING THE PUBLIC

CMRA Newsletter

P.O. Box 283 Columbia, MO 65205

February 1989

Meeting Minutes

The January meeting was well attended and featured the election of new officers. Elected were:

President-George Hessenbruch, NØIMS
Vice-Pres.-Doug Turner, NØIKD
Corresponding Sec.-Jesse Bowen, WMØY
Recording Sec.-Dale Huffington, AEØS
Treasurer-Earl Felten, KAØIBS
Mbr.-at-large-Charlie Turner, WAØR

The club expressed its appreciation for the efforts over the past year of outgoing officers Jesse Lyons (NØFPI, Pres.), George Hessenbruch (NØIMS, V.P.), Charlie Turner (WAØR, Corres. Sec.), and Dewey Bennett (WMØH, Rec. Sec.), as well as Earl Felten (KAØIBS), who agreed to stay on as Treasurer.

Repeater Location Acquisition of the new site on Paquin Towers for the WDØDVG 146.76 repeater is proceeding smoothly. The final paperwork has been completed, and as of Jan. 30 CMRA can proceed with the purchase of the antenna tower on the roof of the building. This is the prime antenna location in Columbia. It will greatly enhance the performance of the 76 machine, adding 167 feet to the antenna height compared to the VA hospital roof. The new site will place the antenna at 1010 feet above sea level. Thanks is due NUØT and NØIMS for their efforts in making this acquisition possible.

Fast-scan TV The fast-scan TV repeater (421.250/439.250) will also be atop Paquin Towers. All major equipment for the repeater is on hand, and work on final assembly is under way by NUØT, NØIMS, and WBØRHK.

Novice Class The club voted to hold a Novice Class starting in February, and

to purchase new ARRL instructional materials. Volunteering for the Novice class committee were: NDØN (Chairman), NØFPI, K4CHS, WMØH, KA9HJP, and WMØY.

Membership dues A committee consisting of past and present Treasurers was appointed to consider whether our current \$12 annual dues should be increased.

Hamfest Committee NØFPI reported that we have space reserved at the Midway Exposition Center for a Hamfest the second Saturday in June. Several details remain to be worked out, including parking space and security provisions.

Christmas Message Booth A traffic booth and Amateur Radio display was set up at Columbia Mall for about six hours on Dec. 3. Although the number of pieces of traffic was lower than hoped for, several people stopped by to ask questions and some expressed interest in the upcoming Novice class. George (NØIMS) reported that a message he sent to Alabama arrived in about four hours. Thanks to those who participated.

Membership

Membership invitation All who are interested in Amateur Radio, licensed or unlicensed, are invited to join the Central Missouri Radio Association. If you have been recently inactive in the club, please consider reactivating your membership. The CMRA provides a variety of opportunities to enhance your Amateur Radio skills: Public Service events, technical seminars, ARRL/VEC exams, repeater information and policy input, emergency communication practice, and familiarity with the local ham community.

Membership dues for 1989 are \$12 and can be paid at meetings or by mail to the club address. Please make checks payable to the Central Missouri Radio Association.

Newsletter Policies

This Newsletter is mailed to CMRA members two weeks before each regular meeting. Submissions of news or information of interest to members are welcome. Please try to send items for publication at least one week before the Newsletter mailing (that is, three weeks before the regular meeting). Notices of equipment for sale can be included on a space available basis, with CMRA members having priority. For submissions, questions, or corrections, contact Jesse, WMØY (autodialer 28, or 474-7674).

Membership applications Five new member applications were received at the Jan. meeting:

Brent Wilson
Winston Minning-KBØDUH
Joann Harmon
Max Graham-KCØIC
Bob Pickett-KBØDNY

February Meeting

The next CMRA meeting is scheduled for Feb. 14 at 7:00 pm at the **Club Station**, 1805 W. Worley, in the basement of the Red Cross Chapter Office (just east of Machens Ford), instead of at the normal location in the Community Meeting Room at Boone Electric Coop. The Feb. meeting will include a planning and orientation meeting for the Novice class. A tape of the award-winning ARRL film *The New World of Amateur Radio* will be shown.

Novice Class

The organizational meeting for the new novice class will be held at the Feb. club meeting. The class usually meets once a week for 10-12 weeks and includes preparation for both code and written exams. The classes are free and the day and time will be decided by those attending the Feb. 14 meeting at the club station (see above for address).

VE Exams

All exam elements, including code, are normally available after regular club meetings. Preregistration is not required, but advance notice for code exams is desirable. For information, contact John, NDØN, 657-2391.

Central Missouri Emergency Net

The Central Missouri Emergency Net (CMEN) provides communications during emergencies and when severe weather is in the area. It is a part of the National Weather Service Skywarn program and has often been the eyes and ears of the Weather Service, providing observations

not possible with radar alone. The net has weekly meetings for practice at **9:00 pm local time every Wednesday** on the WDØDVG repeater (146.76/.16).

All are encouraged to check in on the net to increase everyone's familiarity with local operators and their locations. The practice sessions usually last 10-15 minutes, and often include news and information of interest to those who live in Central Missouri. The Net Manager is Ben Smith, KØPCK (Columbia), and Net Control stations are Dan (NØFPE, Columbia), John (NDØN, Ashland), Ann (WBØTEG, Columbia), Carol (WBØWLU, Fulton), and Jesse (WMØY, Columbia.)

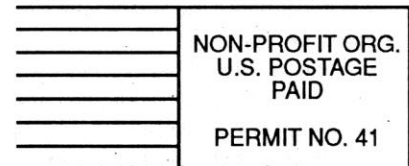
January CMEN Net Report: 4 sessions, 62 checkins, 3 pieces of traffic.

Estate Sale

Numerous items from the estate of KAØJUT, SK, are available. Contact WØRQL at (314)336-4372 for prices and details. Some of the items available: Yaesu 107M HF xcvr, FC107 ant. tuner, SP107 speaker/patch, YM38 mic, F12100Z amp, FT-207R HT (no battery), and YM24 speaker mic; KWM-2 HF xcvr, PS, patch, speaker, and xtals for 3.4-30 MHz; 10M 3 el. beam on pushup pole; Bell&Howell scope, design console, and VOM; Termaline 500W dummy load, and RS TRS-80 Color Computer. Items range from good to excellent.

Central Missouri Radio Association

P.O. Box 283
Columbia, MO 65205



JESSE BOWEN - WMØY
1915 BLUERIDGE RD
COLUMBIA, MO 65202