



The CMRA SQUELCH TALE

AMATEUR RADIO SERVING THE PUBLIC

March-April 1995 An ARRL Special Service Club WDØDVG Repeater 146.16/.76

President's Corner - ????

A Funny Thing Happened on the Way to the February Forum... 'er - Make that Meeting... Nobody remembered to pick up the key for the meeting room! This shows what can happen when you have no leaders!

The March Meeting went a little smoother as it was held at the Fire Training Facility. In fact, Rob, NØLLZ, volunteered to be the Vice President and was immediately elected to the position (we didn't want to give him a chance to change his mind! HA!). We discussed several ways to increase club activity. We hope to have more informal "get togethers" this year and are looking for ideas for family fun activities.

The April 11, 1995 meeting will be held at the Boone Electric Marsh Building, 609 Nebraska (corner of 7th and Nebraska) at 7:00 P.M. Please make plans to attend.

Notice: Starting with the April 11, 1995 meeting, we will be in the Marsh Building at 609 Nebraska (corner of 7th and Nebraska) until further notice.

Central Missouri Radio Association P.O. Box 283, Columbia, MO. 65205	
President.....	
Vice-President.....	Rob Emerson, NØLLZ
Corresponding Secretary.....	Perry Ogletree, NØNMC
Recording Secretary.....	Bob Bosma, NØWYF
Treasurer.....	John Brandt, KBØPHQ
Member-at-Large.....	
The CMRA is a not-for-profit Missouri corporation. To receive the newsletter, or to submit articles, contact the editor, Perry Ogletree, NØNMC, 3609 Bray Ave., Columbia, MO. 65203-0877 [(314)445-2662]. Equipment ads by individuals will be accepted as space allows.	

Dues Notice!

Your 1995 C.M.R.A. Membership is due.

\$15.00 Individual and \$20.00 Family.

Send your check to:

Central Missouri Radio Association
P.O. Box 283.
Columbia, MO. 65205.

Your mailing label should reflect your membership status. Please check the information, correct and send to the above address as needed. If street names are abbreviated, please supply the complete name. If you know your ZIP+4, I need that too! Optionally, please include your home phone number.

The WDØDVG Story - Perry Ogletree NØNMC Part IV - The Move!

All the cabinet hardware has been received. The electrical service work should be completed and the "pad" in place for the cabinet sometime in April. We will need to schedule a "work party" to install the cabinet and repeater. Mike Baker, NØLBA, states that the guying system for the tower needs to be redone. As soon as the repeater is relocated, the autopatch access codes will be changed and new cards will be sent to all paid members. Your donations are still needed!

HELP NOW!

WIAW schedule

Pacific	Mtn	Cent	East	Sun	Mon	Tue	Wed	Thu	Fri	Sat
6 am	7 am	8 am	9 am	Visiting Operator Time		Fast Code	Slow Code	Fast Code	Slow Code	
7 am	8 am	9 am	10 am		Code Bulletin					
8 am	9 am	10 am	11 am		Teleprinter Bulletin					
9 am	10 am	11 am	noon							
10 am	11 am	noon	1 pm							
11 am	noon	1 pm	2 pm							
noon	1 pm	2 pm	3 pm							
1 pm	2 pm	3 pm	4 pm	Slow Code	Fast Code	Slow Code	Fast Code	Slow Code	Fast Code	Slow Code
2 pm	3 pm	4 pm	5 pm	Code Bulletin						
3 pm	4 pm	5 pm	6 pm	Teleprinter Bulletin						
4 pm	5 pm	6 pm	7 pm	Fast Code	Slow Code	Fast Code	Slow Code	Fast Code	Slow Code	Fast Code
5 pm	6 pm	7 pm	8 pm	Code Bulletin						
6 pm	7 pm	8 pm	9 pm	Teleprinter Bulletin						
6 ⁴⁵ pm	7 ⁴⁵ pm	8 ⁴⁵ pm	9 ⁴⁵ pm	Voice Bulletin						
7 pm	8 pm	9 pm	10 pm	Slow Code	Fast Code	Slow Code	Fast Code	Slow Code	Fast Code	Slow Code
8 pm	9 pm	10 pm	11 pm	Code Bulletin						
9 pm	10 pm	11 pm	Mdnte	Teleprinter Bulletin						
9 ⁴⁵ pm	10 ⁴⁵ pm	11 ⁴⁵ pm	12 ⁴⁵ am	Voice Bulletin						

☐ Morse Code transmissions:

Frequencies are 1.818, 3.5815, 7.0475, 14.0475, 18.0975, 21.0675, 28.0675 and 147.555 MHz.

Slow Code = practice sent at 5, 7-1/2, 10, 13 and 15 WPM.

Fast Code = practice sent at 35, 30, 25, 20, 15, 13 and 10 WPM.

Code practice text is from the pages of *QST*. The source is given at the beginning of each practice session and alternate speeds within each session. For example, "Text is from July 1992 *QST*, pages 9 and 81" indicates that the plain text is from the article on page 9 and mixed number/letter groups are from page 81.

Code bulletins are sent at 18 WPM.

☐ Teleprinter transmissions:

Frequencies are 3.625, 7.095, 14.095, 18.1025, 21.095, 28.095 and 147.555 MHz.

Bulletins are sent at 45.45-baud Baudot and 100 baud AMTOR, FEC Mode B. 110-baud ASCII will be sent only as time allows.

On Tuesdays and Saturdays at 6:30 P.M. Eastern time, Keplerian Elements for many amateur satellites are sent on the regular teleprinter frequencies.

☐ Voice transmissions:

Frequencies are 1.855, 3.99, 7.29, 14.29, 18.16, 21.39, 28.59 and 147.555 MHz.

☐ Miscellanea:

On Fridays, UTC, a DX bulletin replaces or is added to the regular bulletins.

WIAW is open to visitors during normal operating hours: from 1:00 P.M. until 1 A.M. on Mondays, 9 A.M. until 1 A.M. Tuesday through Friday, from 1 P.M. to 1 A.M. on Saturday, and from 3:30 P.M. to 1 A.M. on Sundays. FCC licensed amateurs may operate the station from 1 - 4 P.M. Monday through Saturday. Be sure to bring your current FCC amateur license or a photocopy.

In a communications emergency, monitor WIAW for special bulletins as follows: voice on the hour, teleprinter at 15 minutes past the hour, and CW on the half hour.

Headquarters and WIAW are closed on New Year's Day, President's Day, Good Friday, Memorial Day, Independence Day, Labor Day, Thanksgiving and the following Friday, and Christmas Day. On the first Thursday of September, Headquarters and WIAW will be closed during the afternoon.

Meeting Minutes - Perry Ogletree NØNMC

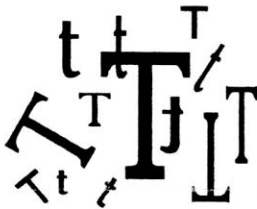
As the "senior" club officer at the March meeting, I had to wear several hats! The meeting was conducted in a very informal manner and covered several important topics. The members felt that all those who have donated their resources to help get the .76 machine back on the air should be recognized. This was a project started by Bill Stroud, NØNMB, our previous President. I am carrying on his project to make sure we acknowledge all the support we get from our members and community.

Our new VP, Rob, is getting in touch with Bill Brady, NØUEY, to check the status of the Hamfest. With additional donations, we will have replaced enough of our funds expended on the repeater to hold the Hamfest. This, of course, depends on enough active help to pull it off!

T-Hunting...

The University Ham Club is planning a "T" hunt for Saturday, April 8, 1995.

This is a real fun activity and is great training. If you are interested, contact one of the University Club members for details.



Product Review - Perry Ogletree NØNMC

Heil Sound SA-1 Compact Sound System and BM5 Single Boomset

The SA-1 is a small bass ported speaker with internal amplifier and equalization control. It is powered by four internal "C" cells or external 12 volts making it ideal for mobile use. I found the audio to be very clear and smooth. I did have some problem adjusting the volume control on the rig I attached the speaker to. Distortion would become a problem if I set the rigs volume control above a critical level. If I set it too low, I had to increase the gain on the speaker amplifier causing more background hiss. When it is set right though, it sounds great!

The BM5 is a combination single headset and boom mike. As with all Heil products, it is well built and high quality. The headphone is lightweight, comfortable, and offers good sound

Product Review - Continued...

reproduction. The mike can be ordered with the HC4 (DX) or HC5 (Regular) elements. I choose the HC4 for weak signal work. All "on the air" reports rated the audio as excellent. The headset is also available in dual headsets for better noise blocking.

Central Missouri Radio Net

The annual state wide tornado drill was held on Thursday March 9 at 6:30pm.

The CME net was called on the 146.76 and 146.685 repeaters at the same time to take advantage of the wide area coverage of the 146.685 repeater. We had direct contact with the National Weather Service in St. Louis via 444.975 and the MARLA link in High Hill, Mo. As this was a state wide drill all RACES/ARES groups were asked to hold a net and report the number of check-ins, county of station, and current weather spotter training status. This information went directly to the NWS via the MARLA link from this area.

Areas reporting were as follows:

- Moberly area 33 checkins representing 3 counties (very good!)
- Audrain County 30 checkins representing 1 county (best!)
- Columbia Area 14 checkins representing 6 counties (**POOR!!**)

Other areas and counties reporting were not via the MARLA link and not available for this report.

All this comes down to a very poor showing when compared to other areas, both rural and metro. Lets try to improve this by monitoring the area repeaters more as we move into the storm season. The NWS is depending on us to provide a good source of information out of this area.

The final totals for this drill were 239 total checkins to the STL weather service representing 6 counties in Illinois and 19 counties in Missouri

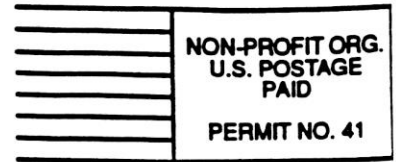
73 Dan-NØFPE Net manager CMEN

Support CMRA!



**Central Missouri
Radio Association**

P.O. Box 283, Columbia, Missouri 65205



**** C.M.R.A. 1994 Member ****
Jesse Bowen WMØY
1915 Blue Ridge Rd.
Columbia, MO 65202

Wanted!!

Your articles, ideas, comments, and hints for the newsletter. Do you have a favorite band, mode, antenna, radio, etc. Please share your knowledge with us!
73 de Perry - NØNMC

Classified Ads

NØNMC - Perry Ogletree
For Sale:

ICOM IC-245 Multi-mode 2 meter transceiver. USB, CW, and FM. Dual VFOs and 15 watts PEP output. With ICOM RM-2 remote control for DTMF, scanning and memory channels. \$300.00 O.B.O. 445-2662

NØNMB - Bill Stroud
For Sale:

Tempo One HF SSB/CW transceiver. 80 to 10 meter coverage (no WARC bands), tube type design with 120+ watts output. With power supply and speaker. \$175.00 O.B.O.

26 feet (3 sections) 25G tower, \$ 50 per section. (314)387-4878

HELP NOW!